

最大15,000PIX対応 高品質ラインカメラ



通信規格

Dual 10GigE、CoaXPress2.0

10GIGE **CXP-12**

水平画素数 ラインレート
8,192~15,360 ~100 kHz

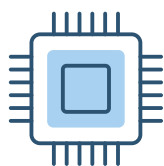
マルチラインCMOS採用 allPIXA evoシリーズ

POINT



高ラインレート

高速被写体に



高品質機能

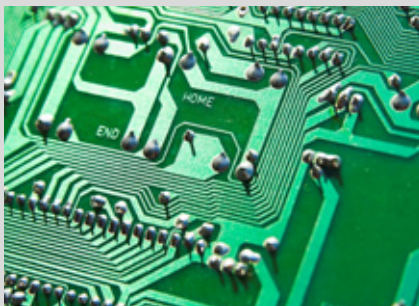
CCD品質+画像補正



最新I/F採用

DXGE, CXP-12

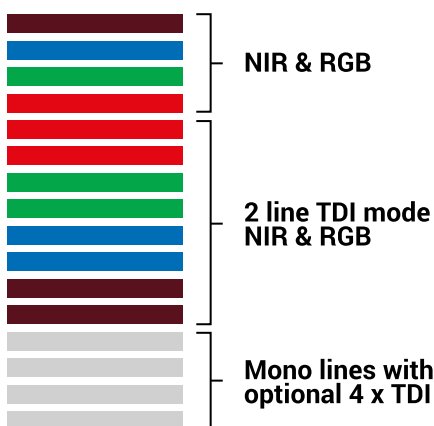
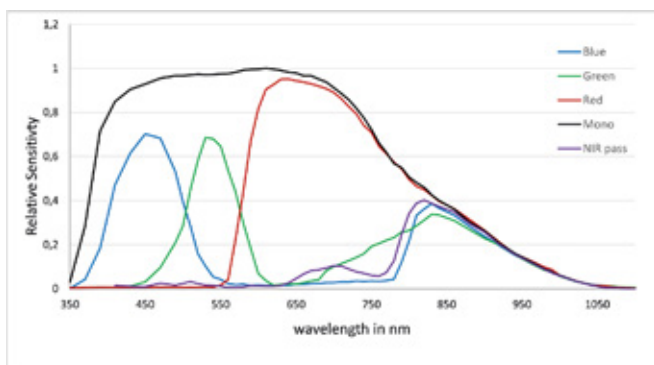
- ・ 高速被写体に向けた高Hzに対応
- ・ **CCD**レベルの撮像クオリティ
- ・ 最新I/F採用(**Dual 10GigE, CXP-12**)



APPLICATIONS:

- High-speed Print Inspection
- PCB & AOI
- Wafer Inspection
- Sorting Processes
- High-resolution Surface Inspection
- Food
- Semiconductor
- EV Battery

SPECTRAL SENSITIVITY:



SPECIFICATIONS:

Sensor	CMOS line scan sensor for RGB, NIR, and mono
Number of pixels	8192 pixels
Active pixel size	5.0 μm x 5.0 μm x 16 lines
Output	Single/Dual 10 GigE GigE Vision® 2.0 compliant
Max. line rate color	RGB: 8192 x 3 pixels: up to 50 kHz (Single)* RGB: 8192 x 3 pixels: up to 90 kHz (Dual)* RGB+NIR: 8192 x 4 pixels: up to 37 kHz (Single)* RGB+NIR: 8192 x 4 pixels: up to 68 kHz (Dual)*
Max. line rate TDI	mono: 8192 x 1 pixels up to 100 kHz for 4x and 8x TDI (Single and Dual)*
Max. line rate in ROI mode	RGB and mono: up to 100 kHz
Data format	3 x 8/10/12 Bit color or 1 x 8/10/12 Bit mono mode or 4 x 8/10/12 Bit RGB + NIR-pass
TDI options color camera TDI options mono camera	color: 2 x TDI / mono: 4 x TDI 8 x TDI
Interfaces	2 x SFP+ (copper and fiber connectors) External I/O (DSUB)
Power supply	12 – 24V DC ± 20%
Trigger mode	Free run / External trigger Line trigger / Encoder / Frame trigger
Operating Temperature	0° - 60°C (housing temperature)
Dimensions / Lens mount	102 x 76 x 82 mm (W x H x D) / M72 x 0.75 mm / F-Mount
Certification	CE, RoHS

*With Chromasens SDK. For more information see allPIXA evo manual.

Customized Cameras and Imaging Systems:

Chromasens offers fully customized light, camera and scanner solutions. All systems are 100% adaptable to customer requirements.