

allPIXA evo 10k / 15k CXP

Line Scan Camera with CoaXPress Interface

High speed CMOS line scan camera with trilinear sensor



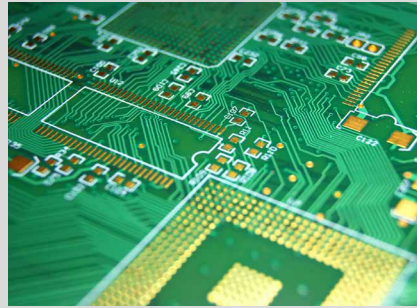
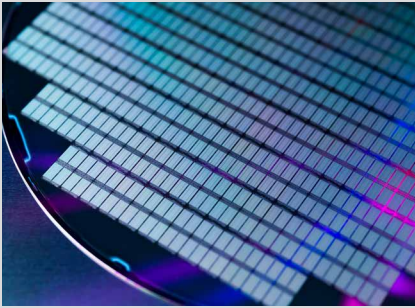
The allPIXA evo CXP cameras with 4 x CoaXPress interface provide the full speed of the 10k and 15k CMOS sensors: up to 68.4 kHz are possible with mono or true color RGB. Featured with line and frame trigger options, variable encoder input and color conversion possibilities, the allPIXA evo CXP is the best choice for all high-resolution web and print inspection applications demanding for high speed. For easy integration, the allPIXA evo CXP comes with the intuitive graphical tool GCT for Windows and Linux, which works with all GenICam compliant CXP frame grabbers.

CAMERA OVERVIEW:

- ▶ CMOS line scan sensor with 10240 or 15360 pixels
- ▶ 4x CoaXPress (CXP-12) interface
- ▶ True RGB color with excellent signal-to-noise-ratio
- ▶ High speed: Up to 68 kHz line frequency with mono or full RGB
- ▶ Supports PoCXP (Power over CoaXPress).
- ▶ Fully compatible with CoaxPress 2.0 standard
- ▶ SDK and graphical tool GCT for Windows and Linux

FEATURES:

- ▶ True RGB color or fast mono
- ▶ Mono camera with up to 3 x TDI (FPGA) in full speed
- ▶ High-precision positioning of the optical center based on exact housing references
- ▶ Frame and line trigger options including variable encoder input
- ▶ Color correction matrix for optimized color image representation
- ▶ Continuous white balancing
- ▶ Precise multi-camera synchronization
- ▶ Multi-Flash function for capturing multiple images in one pass with various lighting conditions

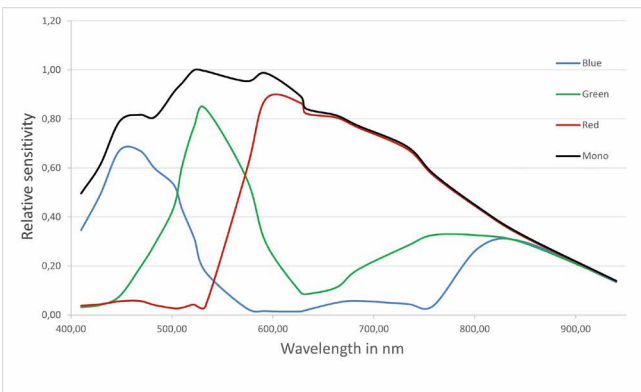


- APPLICATIONS:**
- Flat Panel Display Inspection
 - Printed Circuit Board Inspection
 - High-resolution Document Scanning
 - Wafer and Semiconductor Inspection
 - Print and Label Inspection
 - Web and Foil Inspection
 - High Quality Surface Inspection
 - General Machine Vision

SPECIFICATIONS:

Features	allPIXA evo 15k CXP	allPIXA evo 10k CXP
Sensor	Trilinear CMOS line scan sensor for color or mono	
Number of pixels	15360 pixels	10240 pixels
Active pixel size	5.6 µm x 5.6 µm	
Output	4 x CoaXPress 2.0	
Max. line rate color	15360 x 3 pixels: up to 68.4 kHz	10240 x 3 pixels: up to 68.4 kHz
Max. line rate mono	15360 x 1 pixels up to 68.4 kHz	10240 x 1 pixels up to 68.4 kHz
Max. line rate in ROI mode	up to 68.4 kHz	
Data format	3 x 8/10/12 Bit color or 1 x 8/10/12 Bit mono mode	
TDI options	Only for mono: 3 x TDI (FPGA processing)	
Interfaces	4 x CoaXPress 2.0 with micro-BNC connectors External I/O (DSUB) CoaXPress connections switchable 1, 2 or 4	
Power supply	12 – 24V DC ± 20% (Hirose) Power over CoaXPress: PoCXP requires min. 2 x CXP connectors	
Trigger mode	Free run / External trigger / Line trigger / Frame trigger	
Operating temperature	0° - 60°C (housing temperature)	
Dimensions / Lens mount	102 x 100 x 87 mm (W x H x D) / M95 x 1,0 mm	102 x 76 x 87 mm (W x H x D) / M72 x 0,75 mm
Certification	CE; RoHS	

SPECTRAL SENSITIVITY:



Customized Cameras and Imaging Systems:
 Chromasens offers fully customized light, camera and scanner solutions. All systems are 100% adaptable to customer requirements.